A photograph of a school hallway with a wide staircase. Several students with backpacks are walking on the stairs. Large windows in the background show trees and a building. A blue semi-transparent banner is overlaid on the center of the image.

G/T Tuesday

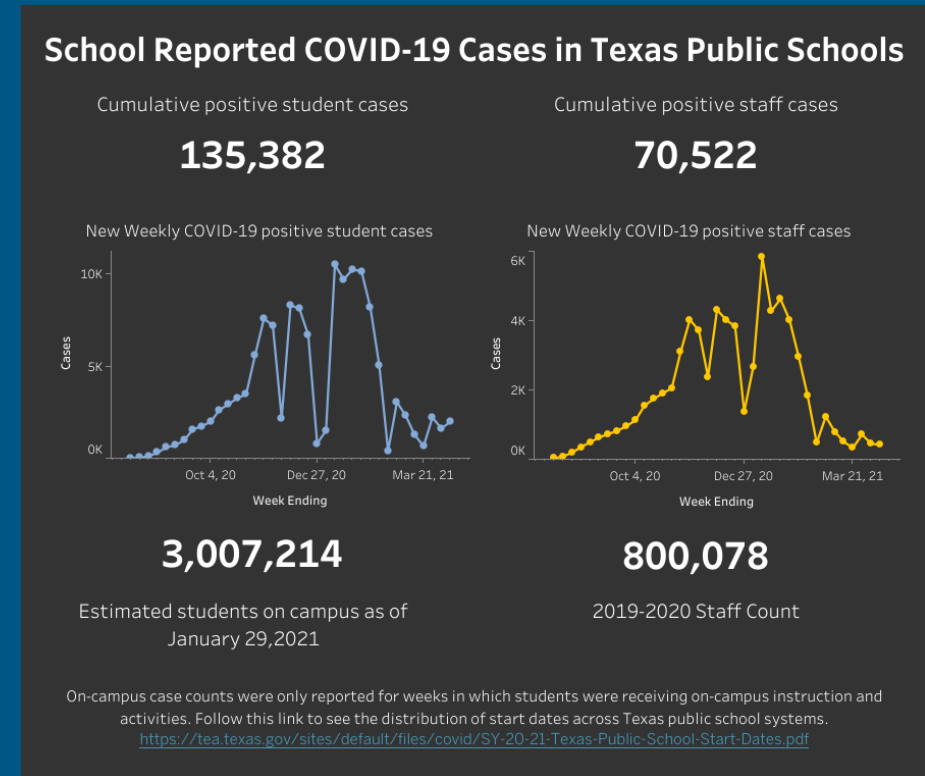
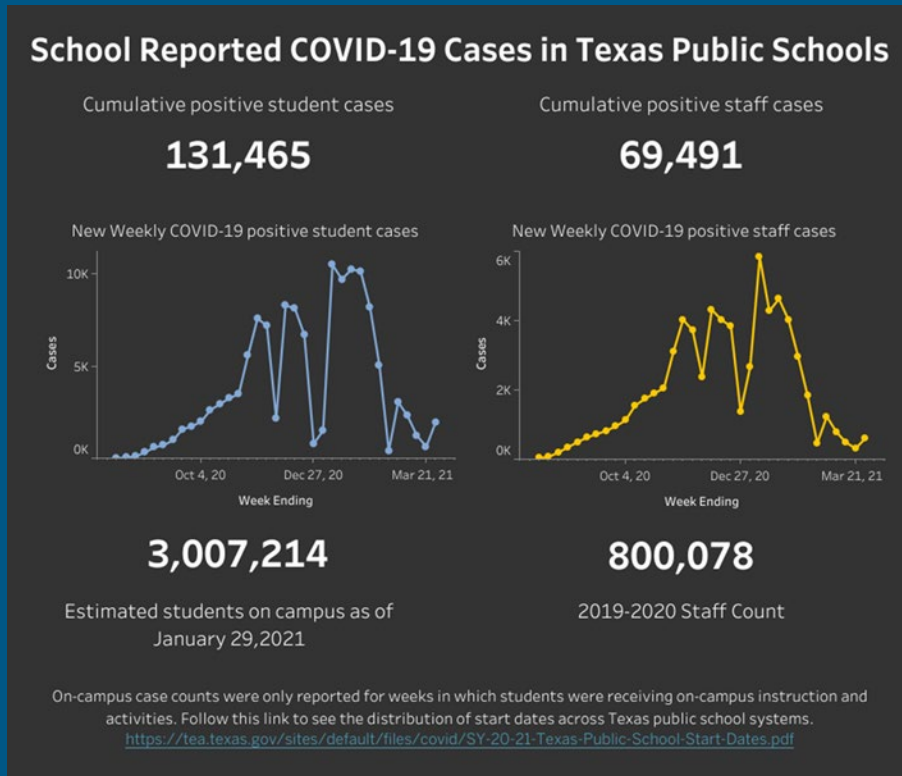
Special Populations – Gifted/Talented Education

April 20, 2021

- G/T Information
- Communicating About Your Program
- District Happenings and Shout Outs
- Question/Answer

4/5/2021

4/20/2021



<https://dshs.texas.gov/coronavirus/schools/texas-education-agency/>

Wellness Check

Main Page

- <https://tea.texas.gov/texas-schools/health-safety-discipline/coronavirus-covid-19-support-and-guidance>

Instructional Continuity Planning

- <https://tea.texas.gov/texas-schools/health-safety-discipline/instructional-continuity-planning>

SPED and Special Populations

- <https://tea.texas.gov/texas-schools/health-safety-discipline/special-education-and-special-populations>

- In 2021, participants must register in advance for the meetings. The links below are the Spring registration links for the G/T Tuesdays.

Morning Edition @ 9:00 am starting at 1/5/2021

- <https://us02web.zoom.us/meeting/register/tZwsduChpz8jHdYl-0uCzYcOzmQV72ltl261>

Afternoon Edition @ 1:00 pm starting at 1/19/2021

- <https://us02web.zoom.us/meeting/register/tZckdeGppjwqHt0U1UHwtq3kcjkzVzwXd7tM>

- After registering, you will receive a confirmation email containing information about joining the meeting.

TEA SY 20-21 Gifted/Talented Education Guidance **STRONG START**
 August 24, 2020

(512) 463-9000 | disasterinfo@tea.texas.gov | tea.texas.gov/coronavirus

Gifted/Talented FAQ: Section Topics

Click on the links below to go directly to that section of the FAQ.

- Program Services
- Identification
- Curriculum and Instruction
- Professional Learning
- Family and Community Involvement

Note: This guidance only applies to the 2020-2021 school year and may include updates to guidance provided in response to the COVID-19 pandemic and resulting school closures during the 2019-2020 school year.

Program Services

- What are LEAs responsible for regarding G/T services during school reopening and potential closures?

LEAs should continue providing program services for G/T students. (TEC §29.122(a); 19 TAC §89.3, State Plan (2.16, 3.1, 3.6 & 4.1- Texas G/T State Plan 2019)).
- Who is responsible for G/T coordination?

LEA G/T services are coordinated by appropriately trained G/T education administrators, coordinators, and specialists (G/T Staff).
- Per House Bill 3, Sec 29.124, each school district shall annually certify to the commissioner that the district has established a program for gifted and talented students, that the program is consistent with the Texas State Plan for the Education of Gifted/Talented Students, and the use of funds on the district's program for G/T students. How will this be implemented during the 2020-2021 school year?
 - LEAs will continue to follow the certification process implemented in 2019-2020.
 - Identify and serve G/T students
 - Identify LEA G/T program service options
 - Report the use of G/T funds
 - Submit the plan for G/T services in all learning platforms
 - The agency will roll out the next phase of the certification process as a pilot with LEA trainings for full implementation in 2021-2022.

If you have further questions, please submit them to disasterinfo@tea.Texas.gov and monica.brewer@tea.Texas.gov

TEA Gifted/Talented Education **STRONG START**
 October 15, 2020

(512) 463-9000 | disasterinfo@tea.texas.gov | tea.texas.gov/coronavirus

This guidance only applies to the 2020-2021 school year provided in response to the COVID-19 pandemic.

Local Educational Agencies (LEAs) must provide Gifted and Talented (G/T) services for students in all learning settings. The G/T assessment waiver for new identification ended in May 2020. LEAs are expected to resume the 2019-2020 identification and start the 2020-2021 identification for G/T process.

State Goal for Services for G/T Students
 Students who participate in services designed for G/T students will demonstrate skills in self-directed learning, thinking, research, and communication as evidenced by the development of innovative products and performances that reflect individuality and creativity and are advanced in relation to students of similar age, experience, or environment. High school graduates who have participated in services for G/T students will have produced products and performances of professional quality as part of their program services.

Table of Contents

- Gifted/Talented Education.....1
- Fidelity of Services3
- Student Assessment for G/T Services4
- Continuation of 2019-2020 Assessment4
- Assessment Considerations4
- Community Information7
- Student Placement8
- Service Options9
- Acceleration10
- Remote Instruction10
- Considerations from the field11
- Curriculum & Instruction19
- Differentiated Instruction19
- Cluster and Flexible Grouping20
- Texas Performance Standards Project20
- Adapting or Modifying the Curriculum21
- Twice Exceptional21

<https://tea.texas.gov/sites/default/files/covid/SY-20-21-GT-Guidance.pdf>



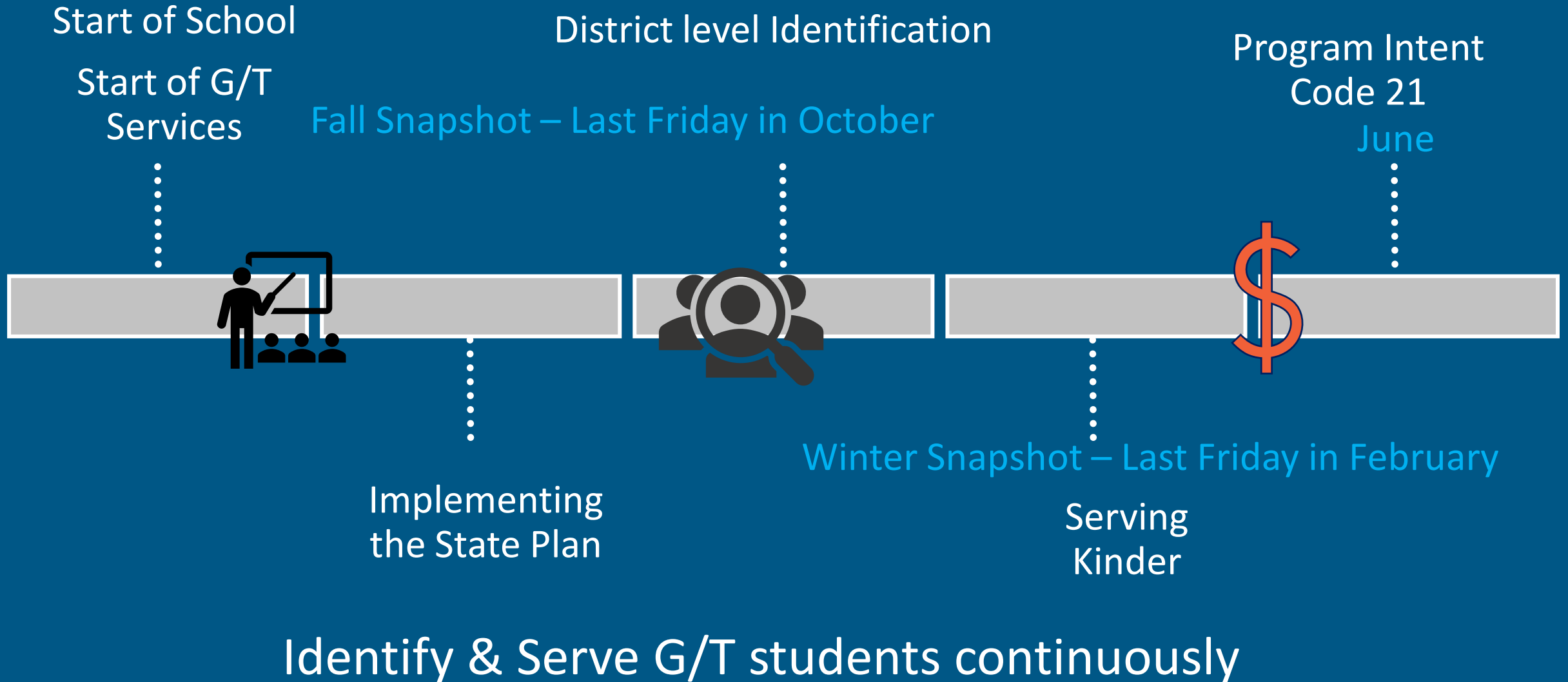
<https://public.govdelivery.com/accounts/TXTEA/subscriber/new>

The State definition: “...gifted and talented students” means: a child or youth who performs at or shows the potential for performing at a remarkably high level of accomplishment when compared to others of the same age, experience, or environment and who:

- Exhibits high performance capability in an intellectual, creative, or artistic area,
- Possess an unusual capacity for leadership, or
- Excels in a specific academic field.

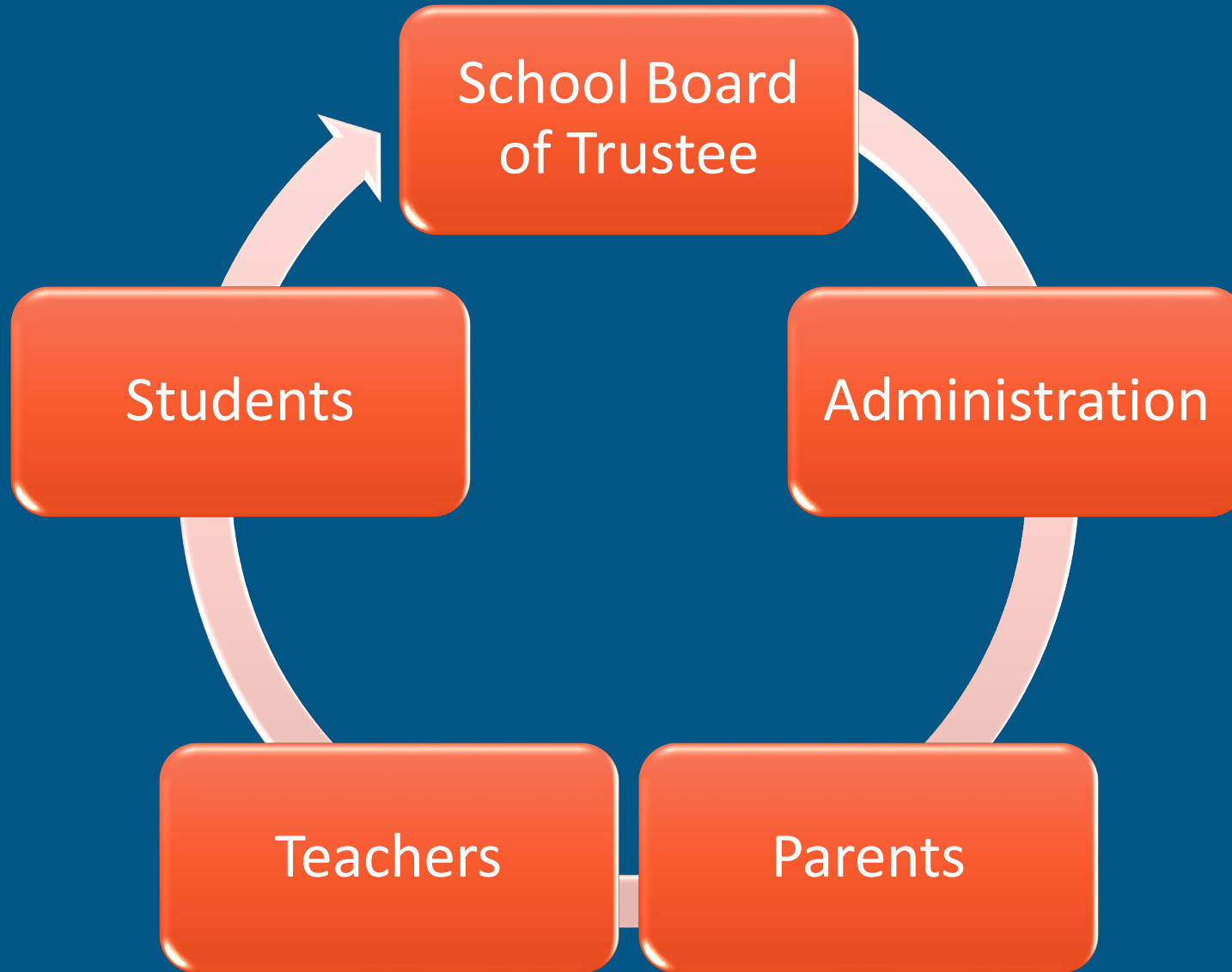
Students who participate in services designed for gifted/talented students will demonstrate skills in self-directed learning, thinking, research and communication as evidenced by the development of innovative products and performances that reflect individuality and creativity and are advanced in relation to students of similar age, experience, or environment. High school graduates who have participated in services for gifted/talented students will have produced products and performances of professional quality as part of their program services.

G/T Certification Timeframe





What Are You Sharing About Your G/T Program?



- What methods of disseminating information ensure that parents are adequately informed of these policies?
- What methods of disseminating information ensure that campus administrators and teachers are adequately informed of these policies?
- Does this information reflect current practices of the district?

How is PEIMS staff notified of the program options to code in PEIMS?

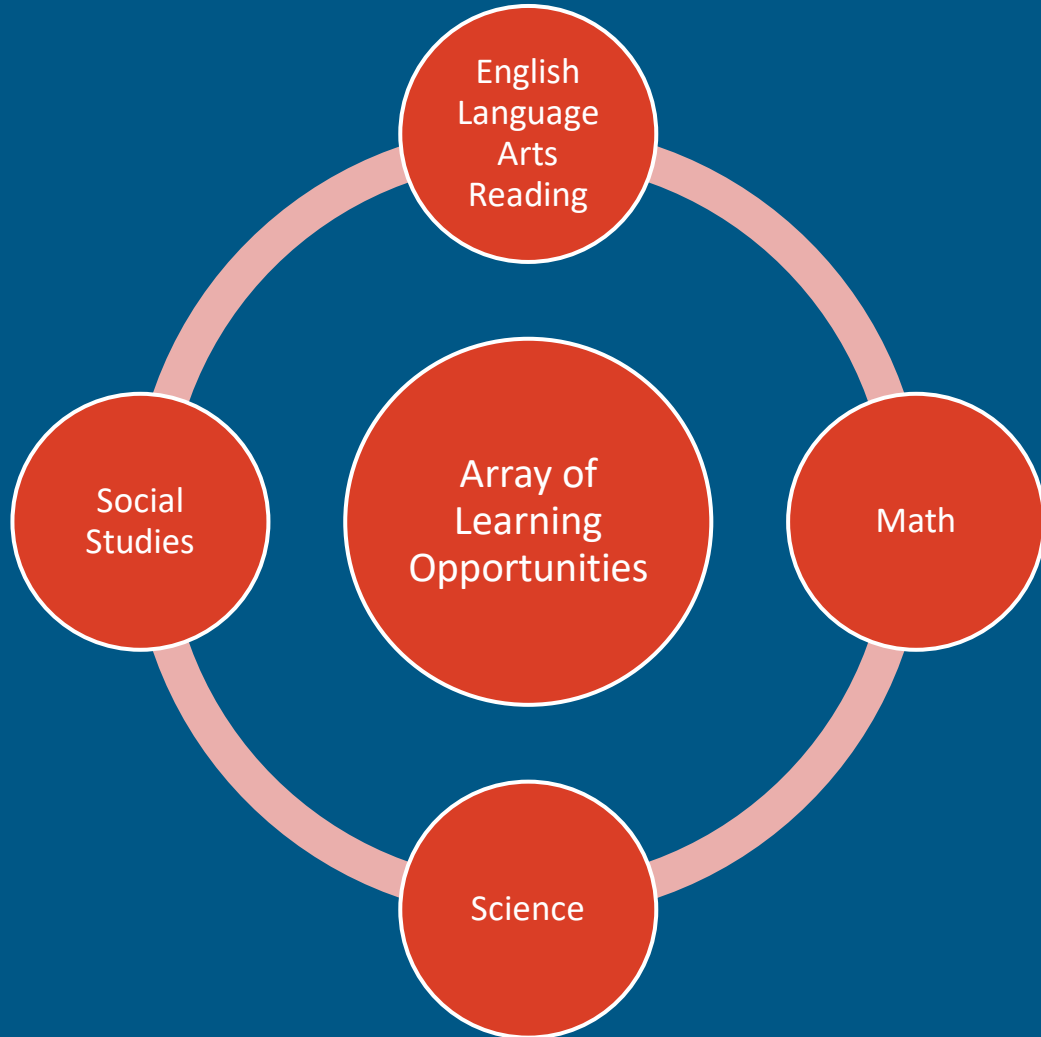
How is PEIMS staff notified that students on furlough must be temporarily removed from PEIMS?

How is PEIMS staff notified that students returning from furlough must be added identified in PEIMS?

How are your
G/T allocation
budgeted?

What and who
is coded to
your G/T
allocation?

Who is
verifying that
the funds are
coded correctly
to PIC 21?



3.1 Identified gifted/talented students are assured an array of learning opportunities that are commensurate with their abilities and that emphasize content in the four (4) foundation curricular areas. Services are available during the school day as well as the entire school year. Parents are informed of these options (19 TAC §89.3(3)).

What G/T services and learning opportunities are available in each of the four foundation curricular areas?

When, during the normal school day, are services made available to students?

When, during the entire school year, are services made available to students?

What methods of disseminating information ensure that parents are adequately informed of these options?

- How does the district/campus evaluate G/T professional development activities?



- What provisions are included in the district improvement plan (DIP) to address services for G/T students on an annual basis?
- What provisions are included in each campus improvement plan (CIP) to address services for G/T students on an annual basis?





What if?

My question is...

Have you thought
about?

Could we?

Urgent Legislative Alert – Action Request

<https://t.e2ma.net/message/e6zfekb/itwj66c>



TEXAS ASSOCIATION FOR THE
GIFTED & TALENTED

FREE!

Accessible from a smartphone,
tablet, or computer.



Subscribe Today!



EL Web Portal

[TXEL.org](https://www.txel.org)

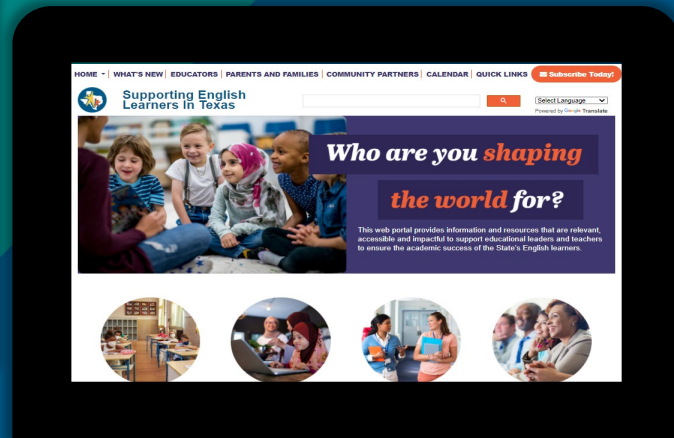
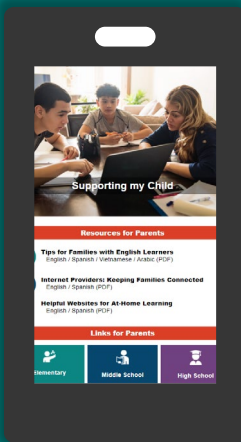


Providing information and resources that are

Relevant, Accessible, and Impactful.

Designed For:

- ✓ Teachers
- ✓ Educational Leaders
- ✓ Families of English Learners
- ✓ English Learners
- ✓ Community Partners





Contact Information

Monica Brewer, M.S.E.

Monica.brewer@tea.texas.gov

GTED@tea.texas.gov

512-475-0626